



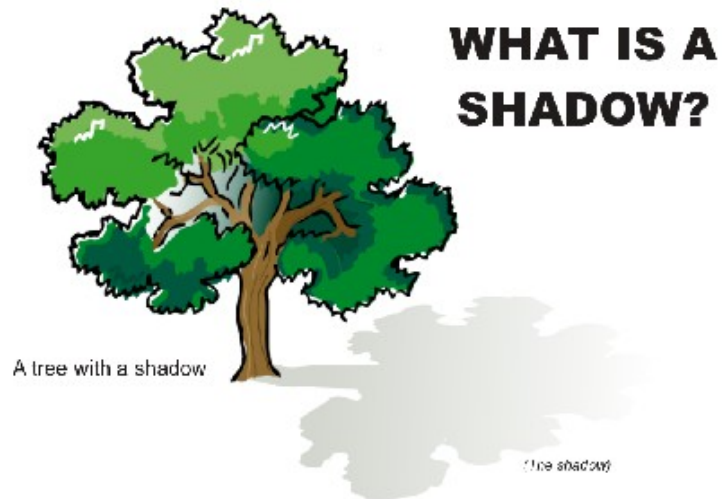
## How It All Began

It all started when the Trinity (the 3 persons that comprise the One True Living God, Jehovah) created the physical realm constituting the whole universe. This was done in a specific fashion: Father thought it; Son loved it; and the Spirit did it.<sup>1</sup> That's because, "In the Trinity, the Father is the manager. The Son is the lover of operations. Holy Spirit is worker. So it's the three-in-one getting things done."<sup>2</sup>

Into this cosmic system they created a celestial globe we call Earth, as well as all the living things to inhabit it. They created a being who they named Adam (*'ādām*, pronounced aw-dawm) and put him in charge of the whole planet as their administrator.

Adam was made in the image and likeness of God.<sup>3</sup>

'Image' means 'resemblance' or 'representative figure' and comes from a Hebrew root word meaning 'shade'<sup>4</sup>. Everything created or instituted by God is a shadow of what is already in Heaven. That is: it resembles it because the light of God shining on the original produces a semblance of it on Earth. This is just like the way the sun produces a shadow of an object that is perfectly like it, but not it.



THE SHADOW AND THE TREE ARE THE SAME

1 – Josiah Cullen. Quoted in Tahmi Cullen (2016) "Josiah's Fire" BroadStreet Publishing Group: Wisconsin, USA p:135 (kindle)

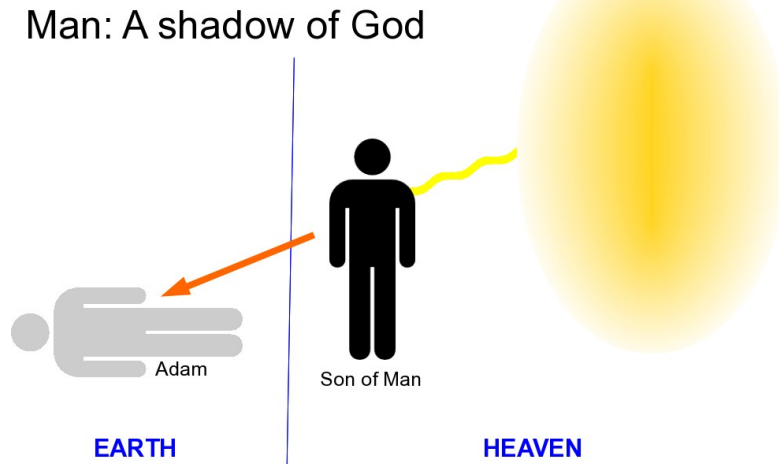
2 – ditto

3 – Genesis 1:26

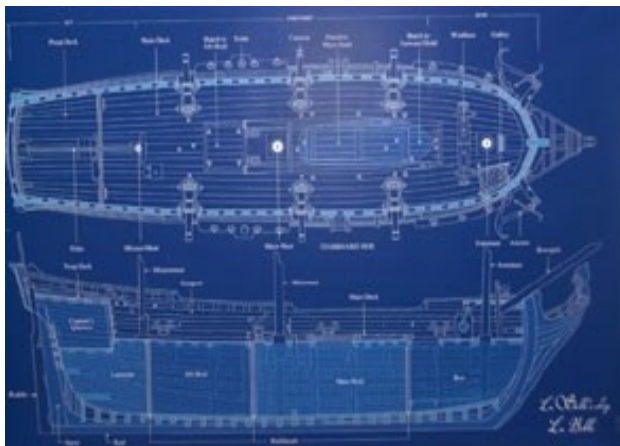
4 – Brown-Driver-Briggs definition



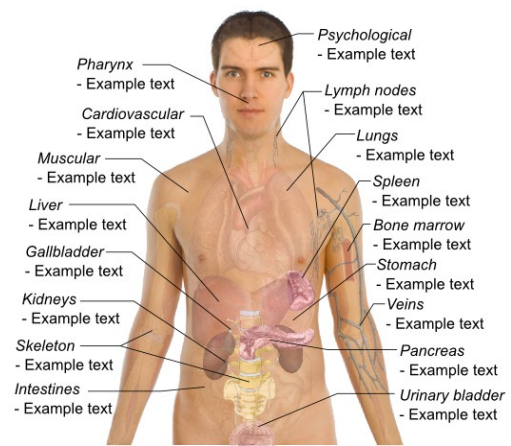
This is why Adam was a shadow of God himself, not an altogether distinctly different being like it would have been if he was a cat.



For alignment with the will and purposes of God, whatever is produced on the Earth must come from a blueprint produced by Heaven<sup>5</sup>, otherwise it is not approved. A blueprint<sup>6</sup> is a plan in heaven that is to be constructed on Earth just like these diagrams:<sup>7</sup>



*A Blueprint Plan*



*Human Body Plan*

Adam was made from a 'blueprint', but it was carried out by God himself, not by a mortal son as it is these days.

The word 'likeness' means 'similitude' or 'closely resembling' (concretely, 'model' or 'shape')<sup>8</sup> and comes from a Hebrew root word meaning 'to be like'.

Taking these two descriptions – image & likeness – we get a more compound understanding of Adam as having character and ability just like God.<sup>9</sup> Included in this description is also the fact that Adam was a spirit, just like God. He was given a physical component and a soul component, both of which were part of his make-up so he could interact with the physical world he was to live in.

5 – e.g. See Ezekiel chapters 40-43; Exodus chapters 25-27

6 – Blueprints were architectural plans which were first printed in the 19<sup>th</sup> Century. They were replaced by whiteprints in the 1940s.

7 – Blueprint: Public Domain, commons.wikimedia.org/w/index.php?curid=50372

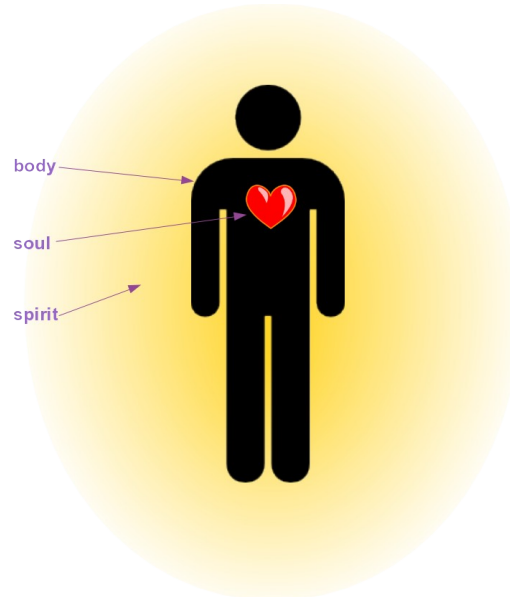
Human Body: [www.clker.com/clipart-29915.html](http://www.clker.com/clipart-29915.html)

8 – Strong's Concordance ([www.eliyah.com/cgi-bin/strongs.cgi?file=hebrewlexicon&isindex=1823](http://www.eliyah.com/cgi-bin/strongs.cgi?file=hebrewlexicon&isindex=1823))

9 – Psalm 82:6 (See NKJV & AMP)

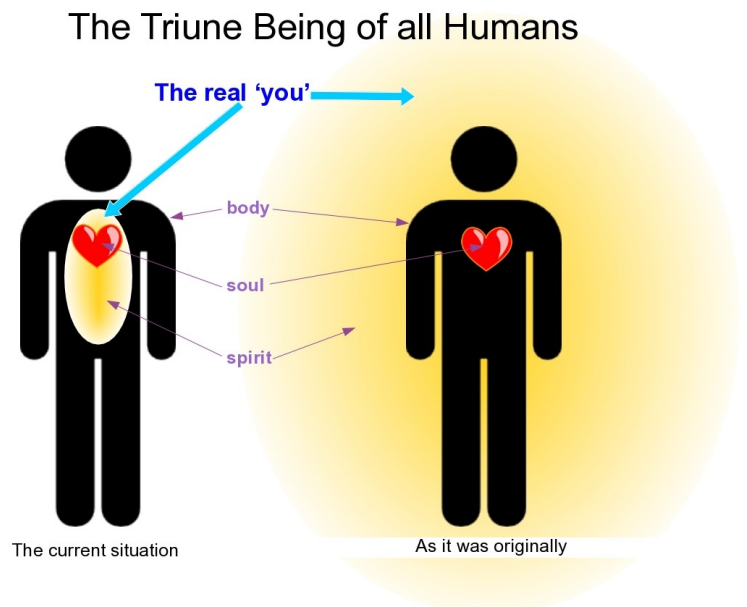


The arrangement of his original tripartite nature is not how we would understand it today. Unlike us, Adam had his dominant spirit-being enveloping himself, with his physical 'body' inside it. It looked like this:



Like his creator, Adam's real self was his spirit, not his body as we consider it today. This means that we shouldn't believe that Adam's 'likeness' to mean that God looked like him with arms, legs, etc. Even though The Son appears to people in human form by transforming himself into our likeness, he is a spirit, with no structure, as are all the members of the Trinity. The exception to this is that Jesus the man (Messiah/Christ) is now in Heaven in a glorified human body. This is something that happened after creation, so we mustn't get confused.

The Hebrew words translated “image and likeness” contain the soul traits of God which were also given to Adam. These include: thought (e.g. logic, reasoning); emotion (e.g. love, anger, compassion); sensation (e.g. seeing, hearing, communicating). This soulfulness is part of our make-up which was given to us for a purpose, but post-Fall humanity has corrupted it into soulishness – but that's another story altogether.



Laurence  
12-6-2017  
([www.CanberraForerunners.org](http://www.CanberraForerunners.org))

***COPYRIGHT***  
All quotes are copyrighted to authors cited.  
This document is free to copy, republish and distribute, but only 'as is'.  
All Canberra Forerunners' documents are licensed under  
Creative Commons Attribution-NonCommercial-NoDerivs 3.0 Unported License