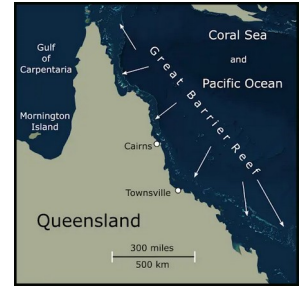


The 'Smoke & Mirrors' of Reef Science

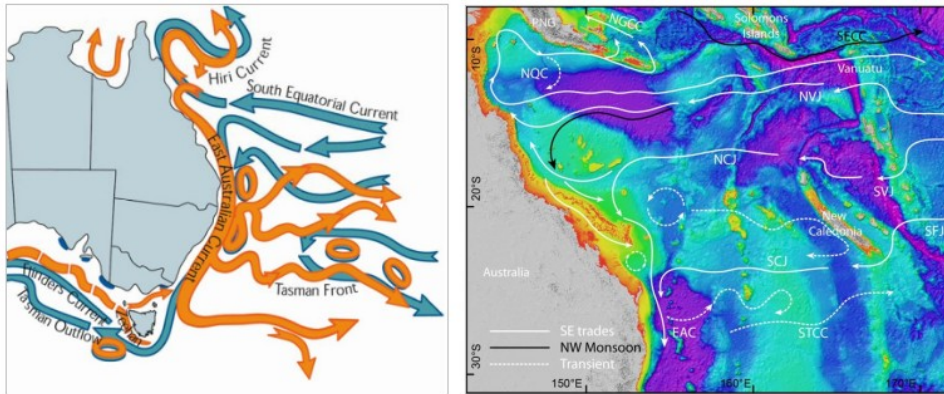
Dr Peter Ridd, is considered an expert on the Great Barrier Reef.¹ He has given a lecture which debunks the 'science' behind catastrophic reef damage caused by human activity. Watch his lecture:

VIDEO: "Culture Wars on the Great Barrier Reef" Dr Peter Ridd at IPA Academy
https://youtu.be/Zd_nAxV4aW4 (it's 30 minutes long)

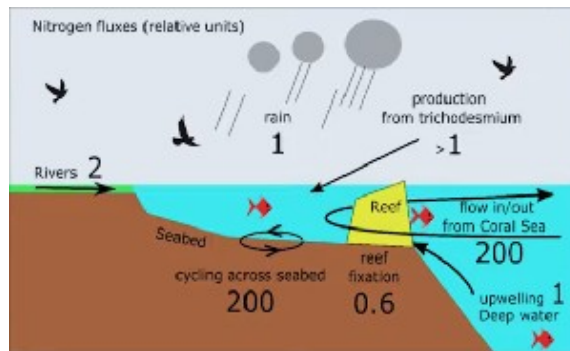


Just a couple of points from his video:

1. The chemicals coming down the rivers onto the reef don't pollute it because they are washed away by the strong currents that flow onto the coast.² Just 8 hours of ocean currents flushing the coastline equals more water than what comes down the rivers on the Queensland coast in one year.

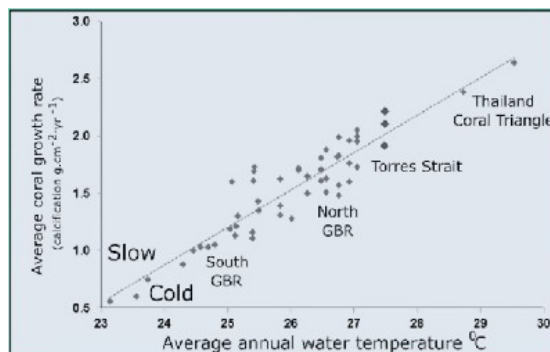


2. Most nitrogen coming down the rivers onto the reef comes from human sewerage, not agricultural fertilizers.
3. The most nitrogen added to the reef water comes from the ocean and decomposition on the sea bed.³



Relative amounts of Nitrogen compared to rain water (rain=1)

4. Coral grows in many water temperatures. It grows faster in warmer temperatures.⁴



1 – MAP: Courtesy of Peter Ridd

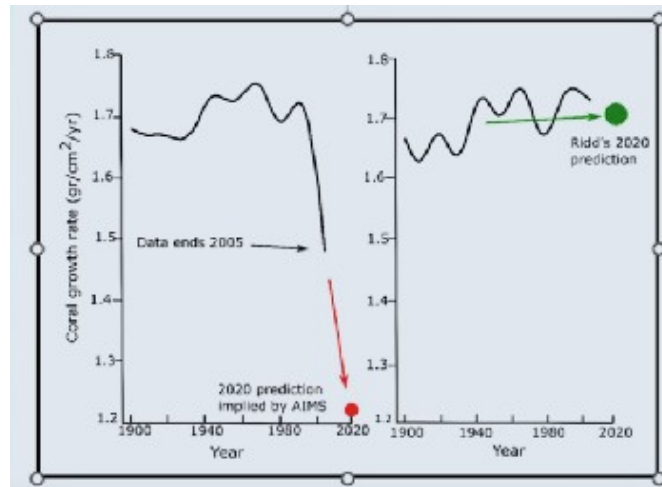
2 – RH map: i0.wp.com/research.csiro.au/emg/wp-content/uploads/sites/194/2018/02/img_5a72a98dacb47.png

LH map: www.redmap.org.au/assets/media/uploads/2012/12/07/1.%20Currents%20along%20Oz%20east%20coasts.png.jpg

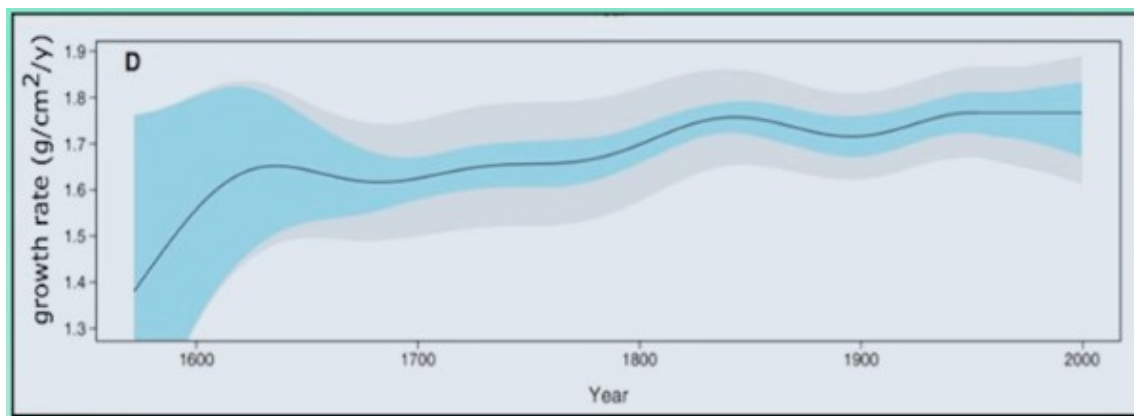
3 – Diagram: Peter Ridd's presentation slide

4 – Diagram: Peter Ridd's presentation slide

5. The data used to prove the GBR is declining in yearly growth was this one.⁵ The decline (according to Dr. Ridd) occurred because they changed the way they took measurements in the 1990s. Additionally, he said, the scientists who did the analysis of the reef that provided the data haven't redone their testing to see if there's any change. (NOTE: Empirical science is always repeatable.)



6. Coral growth rings (like tree rings) show the growth rate of corals over hundreds of years. Their growth has been analysed and has not diminished because of the presence of Westerners on the continent.⁶ [The grey and blue shading are areas of uncertainty (i.e. statistical error allowance) showing the uncertainty of the measurements]



Laurence
25-2-2024
(www.CanberraForerunners.org)

COPYRIGHT
This document is **free** to copy, republish and distribute, but only 'as is'. It is free to quote from at length.
All Canberra Forerunners' documents are licensed under
[Creative Commons Attribution-NonCommercial-NoDerivs 3.0 Unported License](https://creativecommons.org/licenses/by-nc-nd/3.0/)
Quotes are the copyright of their authors.

5 – Diagram: Peter Ridd's presentation slide
6 – Diagram: Peter Ridd's presentation slide